



Direct Dial/Ext: 03000 416749  
e-mail: [andrew.tait@kent.gov.uk](mailto:andrew.tait@kent.gov.uk)  
Ask for:  
Date: 14 November 2019

Dear Member

**KENT FLOOD RISK MANAGEMENT COMMITTEE - MONDAY, 11 NOVEMBER 2019**

I am now able to enclose, for consideration at next Monday, 11 November 2019 meeting of the Kent Flood Risk Management Committee, the following report(s) that were unavailable when the agenda was printed.

**Agenda Item No**

**8 Kent Emergency Planning - Presentation by Tony Harwood (Pages 3 - 18)**

Yours sincerely

A handwritten signature in black ink, appearing to read 'Ben Watts', is written over a faint circular stamp.

Benjamin Watts  
General Counsel

This page is intentionally left blank

Presentation to Kent Flood Risk Management Committee

Lisa Guthrie - KCC Kent Resilience Team Manager

Tony Harwood - KCC Resilience and Emergency Planning Manager

# Resilience and Emergency Planning in Kent



11<sup>th</sup> November 2019



**Kent Resilience Forum**



PREPARING FOR EMERGENCIES IN KENT AND MEDWAY



# KCC Resilience and Emergency Planning Service

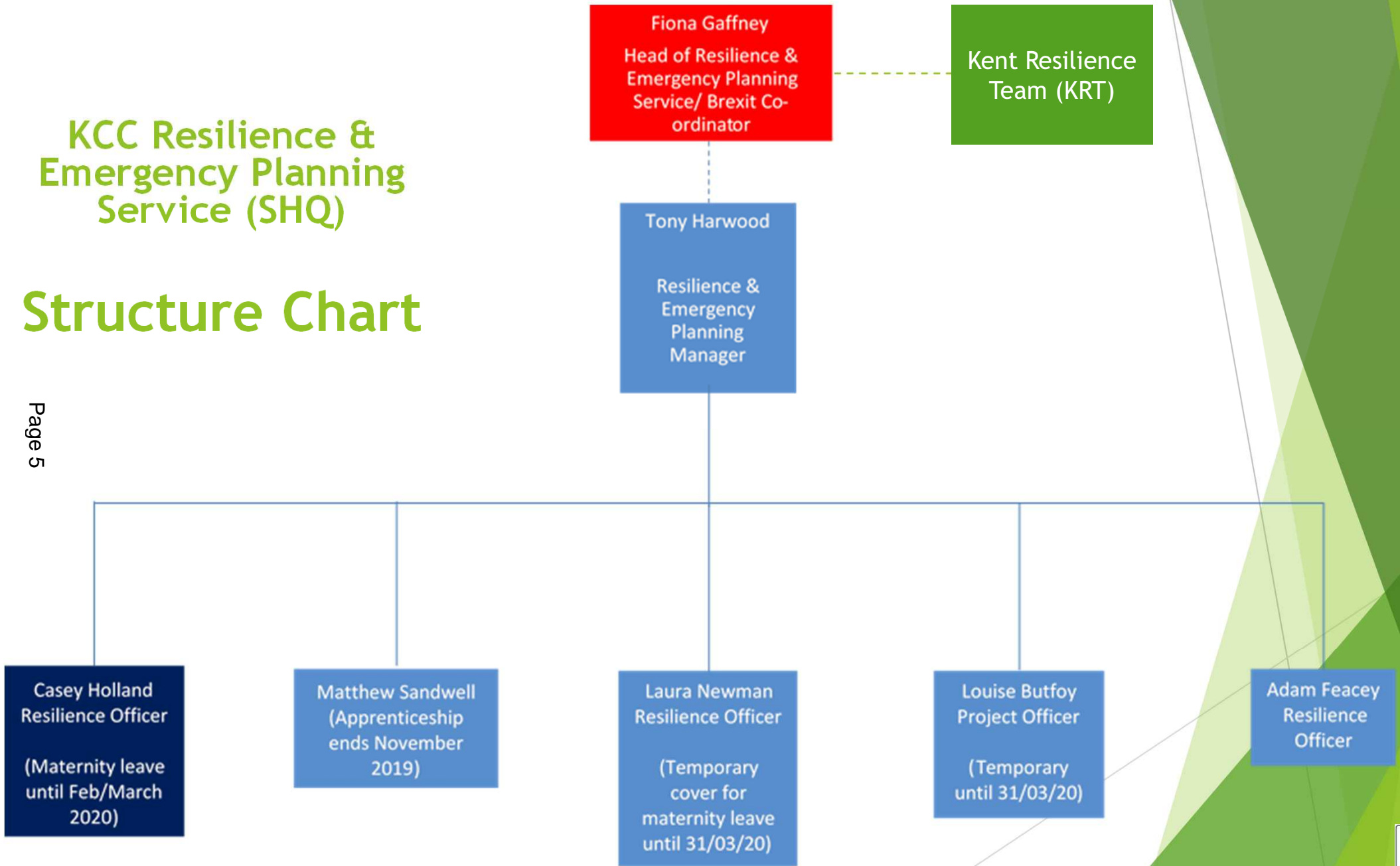
Tony Harwood



# KCC Resilience & Emergency Planning Service (SHQ)

## Structure Chart

Page 5



# What does the SHQ Team do?

“Ensure compliance with **31** separate pieces of resilience legislation, including the Civil Contingencies Act 2004, which defines KCC as a ‘Category 1 Responder’ - with a duty to:

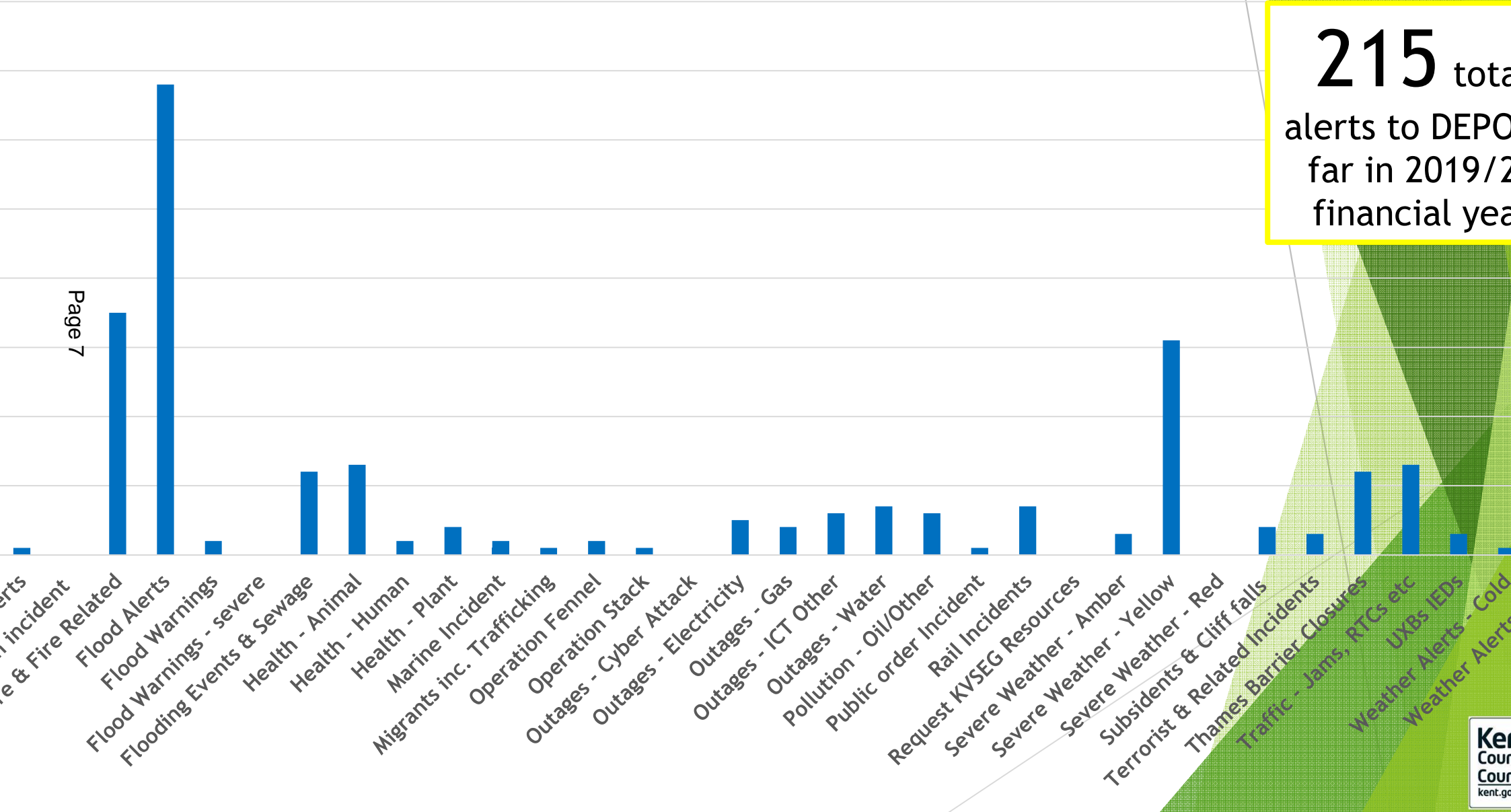
- ▶ risk assess
- ▶ put in place emergency plans
- ▶ put in place Business Continuity arrangements
- ▶ warn and inform the public
- ▶ co-operate and
- ▶ provide advice and assistance to private and third sectors”



# OPERATIONAL RESPONSE

## Breakdown of Duty Emergency Planning Officer (DEPO) Calls 2018/19

Page 7



**215** total alerts to DEPO far in 2019/20 financial year

Bus With U.S.  
Tourists Plunges Off  
English Highway;  
10 Killed, 30 Hurt  
November 11, 1993  
From Associated Press



1939-45  
1953  
1968  
1987  
1989  
1993  
1994  
1998  
2000  
2006  
2007  
2008  
2009  
2010  
2011  
2012  
2013  
2014  
2015  
2016  
2017  
2018  
2019

## Major Incidents and Disasters Affecting Kent





# KCC Owned or Led Emergency & Business Continuity Plans

Maintain **14** Emergency Plans



and **172** Business Continuity Plans

- ▶ Ash Dieback Action Plan
- ▶ Britannia Metals Off-site Emergency Plan - Control of Major Accident Hazards (COMAH)
- ▶ Dungeness B Nuclear Power Station Off-site Emergency Plan
- ▶ Emergency Recovery Plan
- ▶ Flood Response Emergency Plan
- ▶ Givaudan Off-site Emergency Plan - Control of Major Accident Hazards (COMAH)
- ▶ Guidance Note on Stranded Marine Life
- ▶ Kent and Medway Off-site Reservoir Inundation Emergency Plan
- ▶ Kent and Medway Shoreline Pollution Emergency Plan
- ▶ Kent County Council Business Continuity Plans (Services)
- ▶ Kent County Council Corporate Business Continuity Plan
- ▶ Kent County Council Emergency Transport Provision - Policy and Guidance for Responders
- ▶ KRF Animal and Plant Health Emergency Plan
- ▶ Major Emergency Plan
- ▶ Resilience Guidance for Elected Members
- ▶ Vulnerable People and Communities in Emergencies Framework

# Command and Control

“Roles and structures to enable effective emergency management”

- ▶ County Emergency Centre (CEC) available 24/7
- ▶ Weekly Command Rota
- ▶ Duty Emergency Planning Officer (DEPO)
- ▶ On-call Duty Director (and Staff Officer)
- ▶ On-call Tactical Managers
- ▶ On-call Emergency Response Team
- ▶ On-call Recovery Director (and Staff Officer)
  - For wide-area and larger-scale incidents KCC provides ‘Gold Commander’ and command and control structures for multi-agency recovery





# Kent Resilience Team

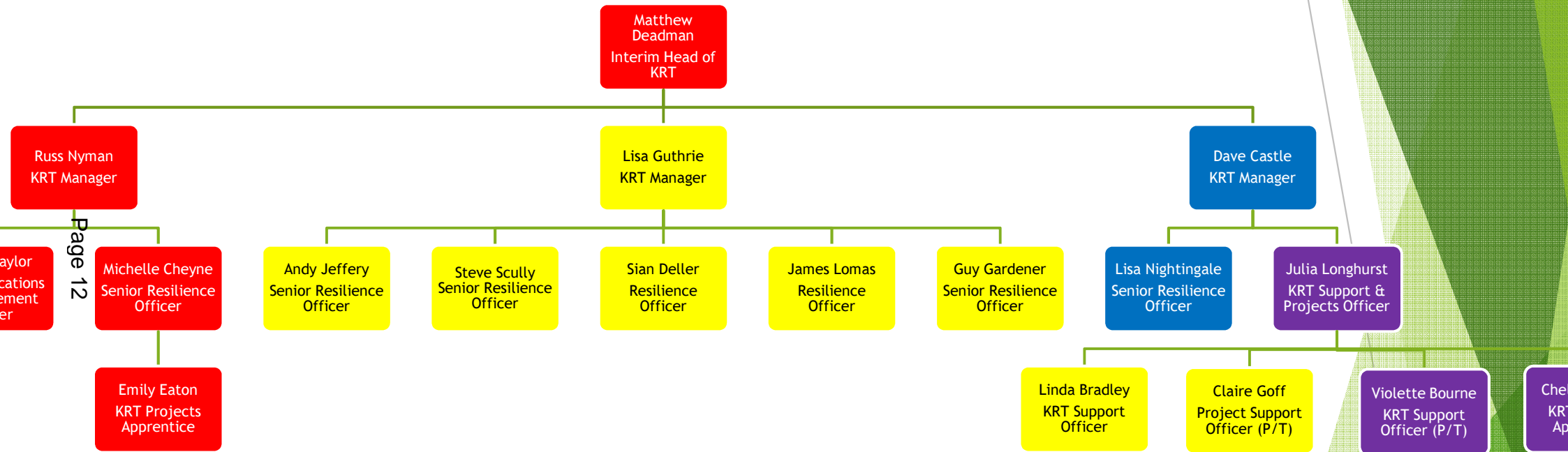
Lisa Guthrie

Kent Resilience Fo



PREPARING FOR EMERGENCIES IN KENT AND

# Resilience Team Structure Chart



Page 12

- Kent Police
- Kent Fire & Rescue
- Kent County Council
- Multi-agency Funded (Kent Police)

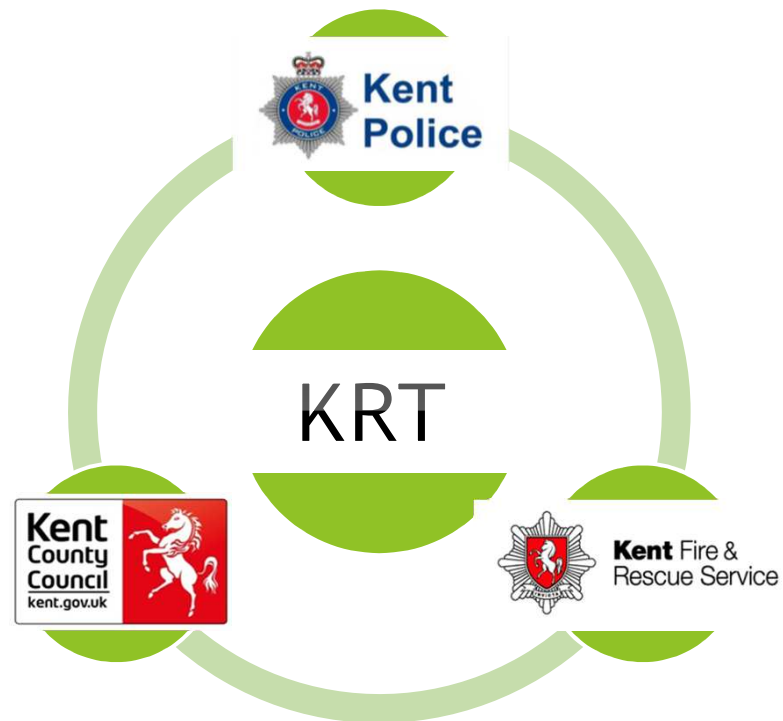
# Kent Resilience Team - who are we?

Formed in April 2014

A multi agency team of  
Emergency Planners and  
support

Brought together to extend  
the work of JESIP in co-  
ordination of planning,  
training and response

Based at KFRS HQ, Tovil



*'the delivery arm of the  
Kent Resilience Forum'*

**Kent Resilience Forum**



PREPARING FOR EMERGENCIES IN KENT AND MEDWAY

representing KCC within the multi-agency arena

working with REPS SHQ team on joint projects to ensure KCC's statutory duties are carried out

working to District and Borough Councils to provide:

- EP and BC advice
- Continuity of training and planning to ensure a County-wide approach
- Liaison with Medway and other bordering local authorities
- Review of flood planning following new flood plan template

delivery of the KRF training programme

KCC Resilience Officers are Duty Emergency Planning Officers (DEPO's)





## The Role of the Duty Emergency Planning Officer (DEPO)

- ▶ Receive the Alerts (24/7)
- ▶ Disseminate the Information (Internal & External)
- ▶ Co-ordinate the Response (KCC, LA, KVSEG, blue light liaison etc.)
- ▶ Act as Tactical advisers to KCC duty and recovery directors
- ▶ Represent KCC within multi agency command and control structures (TCC/SCC)
- ▶ Support Welfare Centre Operations
- ▶ Support Local Authority Co-ordinating Group Operations and Emergency Centers





# The Workload Across the Two Teams

Using priorities from the NRSA and Kent CRR - planning, training and exercising for:

- ▶ Severe Weather - snow, flooding, heatwave
- ▶ Pandemic / Animal disease
- ▶ Toxic chemical/radiation release
- ▶ Maritime / inland pollution
- ▶ Loss of utilities
- ▶ Mass gatherings (events)
- ▶ Gas pipelines
- ▶ Transport incidents - shipping, aviation, rail, road
- ▶ Structural collapse
- ▶ Industrial action
- ▶ Site specific - e.g. Port of Bluewater, Canterbury, Dungeness
- ▶ Operation Specific e.g. Op (includes Perch, TAP, and )



# Winter Preparations and Beyond

Working with REPS for severe weather planning and response

Winter preparedness work - resources, multi-agency workshop

Page 17

Future - community resilience, flood/emergency wardens, spontaneous volunteers

Reservoir planning with Boroughs and Districts



**Kent Resilience Forum**



PREPARING FOR EMERGENCIES IN KENT AND MEDWAY



Thank You

Any Questions ?